

SJSU Academic Standing Rates

Data from SJSU Registrar

Compiled by Camille Johnson

Figure 1.

Totals for DQ and Probation across semesters. Higher numbers in fall semesters would be expected for probations, as new students matriculate, and higher numbers in spring semesters would be expected as students fail to be reinstated.

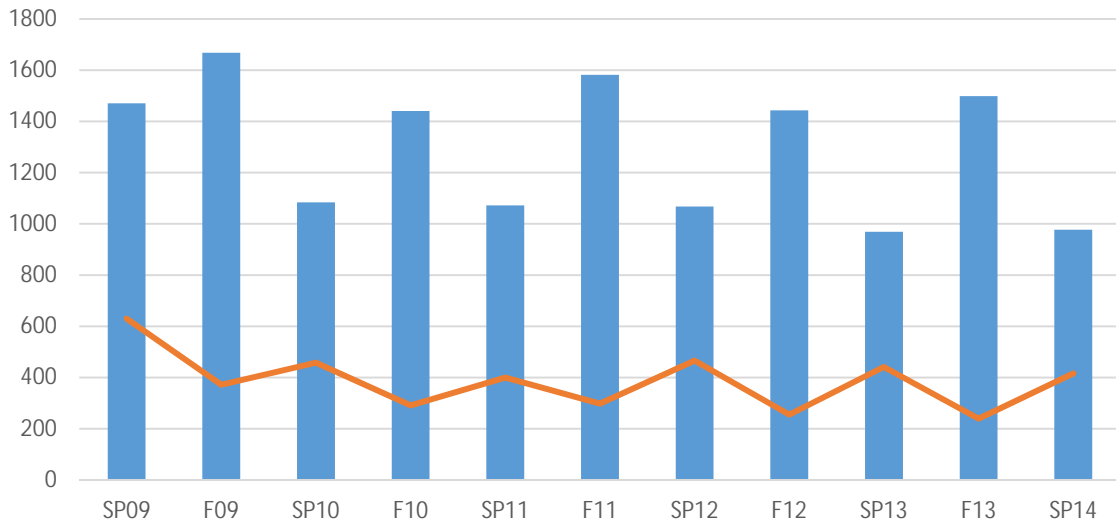


Figure 2.

Overall, percentages of students facing disqualification