

2020-2021

U e H l g S e ce

O E E U I I

San Jose State University
Resident Athletes Center

RESIDENT ACTIVITY CENTER

The Resident Activity Center (RAC) located in Campus Village Building B, is an open space for residents to relax with friends

Campus Village Building B is an apartment building designed to accommodate over 1,550 sophomores, upper-division, and graduate students who seek a more private, independent living environment. Stretching to 15-stories at its highest point, Campus Village Building B offers residents a variety of living options: Studios, three-bedroom, four-bedroom, or five-bedroom apartments, (single and double occupancy) all equipped with a kitchen and a living room area. Kitchens in CVB apartments do not have garbage disposals. The Resident Activity Center, Spartan Study Hub, and the Village Market are also located in Campus Village

Campus Village Building A (CVA) is an eight-story apartment building designed to accommodate approximately 200 faculty, staff, graduate and upper-division undergraduate students. Graduate students, seniors, and juniors may rent a two-bedroom apartment in CVA that two students share, each having their own bedroom. CVA also has two-bedroom apartments that four students share, two students sharing each bedroom and a shared kitchen. The kitchens include a full-sized refrigerator, oven, dishwasher, stackable washer and dryer and a sink with garbage disposal.

Faculty and staff may choose from furnished and unfurnished one bedroom/one bath or two-bedroom/two-bath units or a single efficiency room. Efficiency rooms are similar to hotel rooms and feature a living area, bathroom, and microwave/mini-fridge station. A limited number may be available to graduate students. CVA is equipped with elevators and air conditioning.

Expanded versions of floor plans are available at www.housing.sjsu.edu

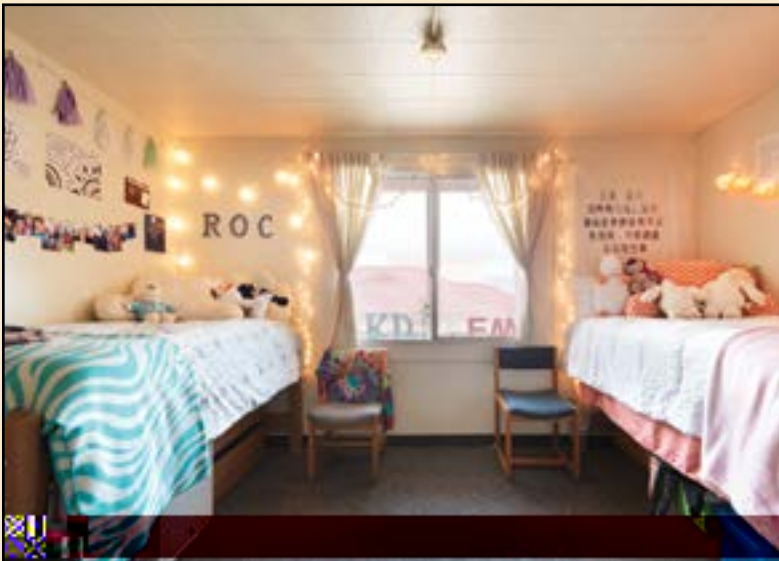
The Suites is a seven-story, suite-style residence hall available to first-year students. The Suites emphasize community living, with a programming focus on the transition to college life, building connections to campus, and supporting students' academic and personal growth. The Suites offer a variety of room options, including single, double, and triple rooms, as well as private and semi-private suites. Each suite includes a living area, kitchen, and bathroom. The Suites also offer a variety of amenities, including a lounge, study areas, and a fitness center. For more information, visit www.housing.sjsu.edu.

CAMPUS VILLAGE BUILDING 2 (CV2)



This 10-story residence hall housing approximately 950 first-year students is equipped with common study rooms, lounges, multi-purpose room, recreation space and other student support spaces to ensure a smooth transition to college life. Bedrooms are double occupancy rooms designed and furnished for two people. Some rooms offer triple occupancy, with three students sharing one bedroom. Housing rent includes basic utilities, Wi-Fi internet access, internet-based TV and furnished rooms. All residents of Campus Village 2 must purchase a Block meal plan.

JOE WEST HALL

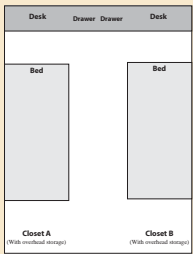


Joe West Hall is a 12-story residence hall that houses over 650 incoming first-year students. Joe West Hall provides a number of living options including Single, double and triple occupancy rooms. Joe West Hall is equipped with two elevators but does not have air conditioning. Housing rent includes basic utilities, Wi-Fi internet access, internet-based TV, and furnished rooms. All residents of Joe West Hall must purchase a Block meal plan.

WASHBURN HALL THE BRICKS



The small community experience in Washburn Hall is designed for incoming first-year students in order to ease the transition to college and provide a supportive first-year experience. This three-story residence hall offers a small living-learning environment for approximately 250 students. The building is divided into six wings of approximately 48 students each, a design that helps promote community among the residents. Students have the option of double or triple occupancy rooms (two or three students per room). Housing rent includes basic utilities, Wi-Fi internet access, internet-based TV, and furnished rooms. This building does not have an elevator but offers air conditioning. All residents of Washburn Hall must purchase a Block meal plan.



Adeline & Amanda
Business Administration/Marketing

Housing C

Housing rent is based on double occupancy, furnished units with a 10-month contract. Rent includes basic utilities, wi-fi internet access, internet-based TP2rnet access, internet-based TP2rn.oontracs, wi-fi hudes b.sjsu.edu
