

AI in the Corporate Tax Department – Let's See It!

40th Annual TEI-SJSU High Tech Tax Institute
November 4, 2024



| Agenda

Kickoff and Intros

0
1

GenAI 101

0
2

Demonstrations and Examples

0
3

Roundtable Discussion


0
4

Questions and Comments

0
5



Objectives of the session



**GenAI Explained
&
Peer Comparison Insights
(Participant Participation)**


**Examples of how
Companies are using
GenAI for Tax**

**Roundtable Discussion
on GenAI for Tax**

Polling Questions

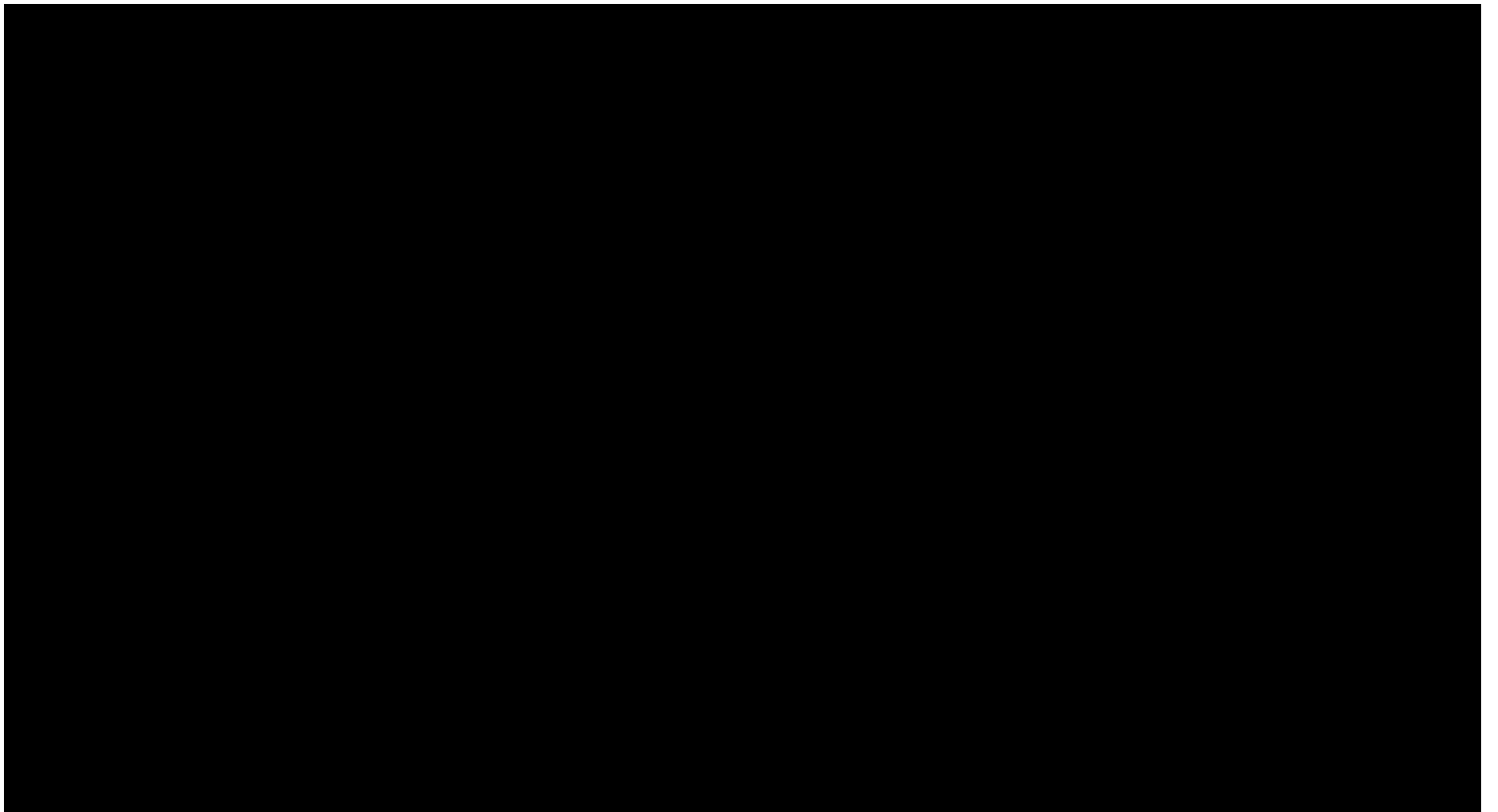
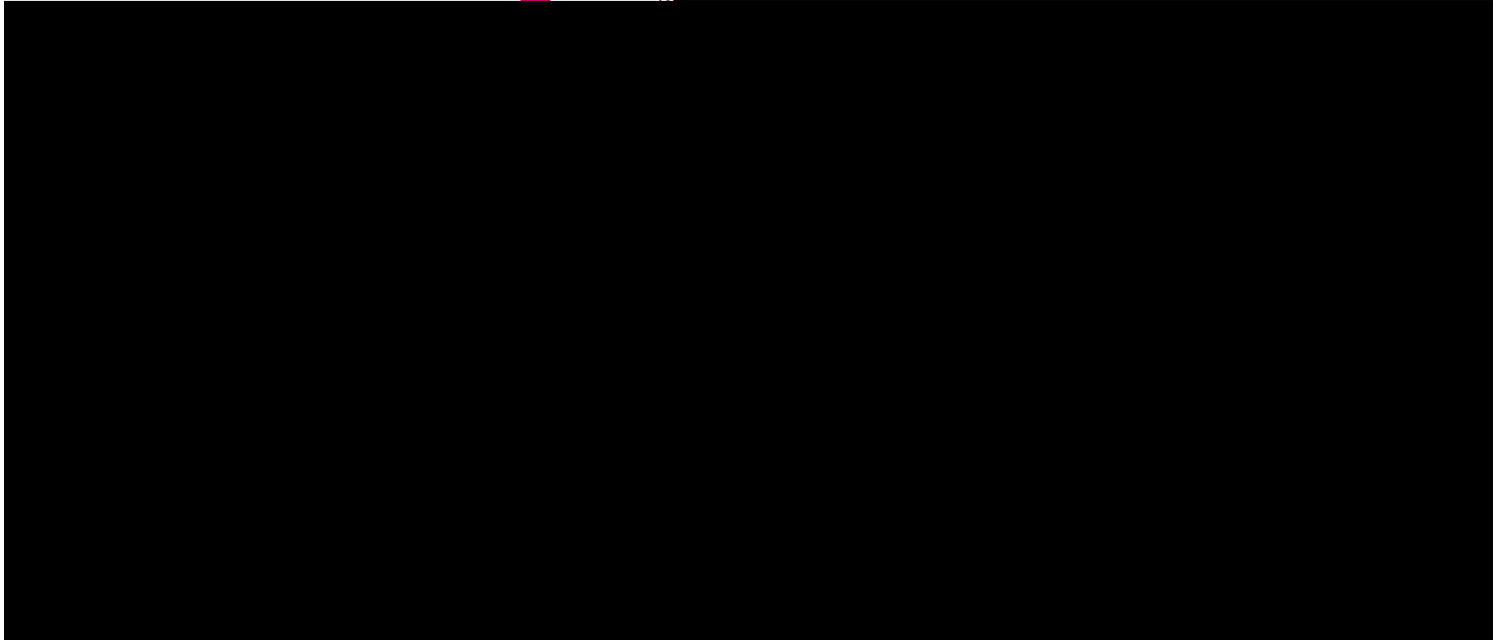
When poll is active respond at [Polling questions](#)

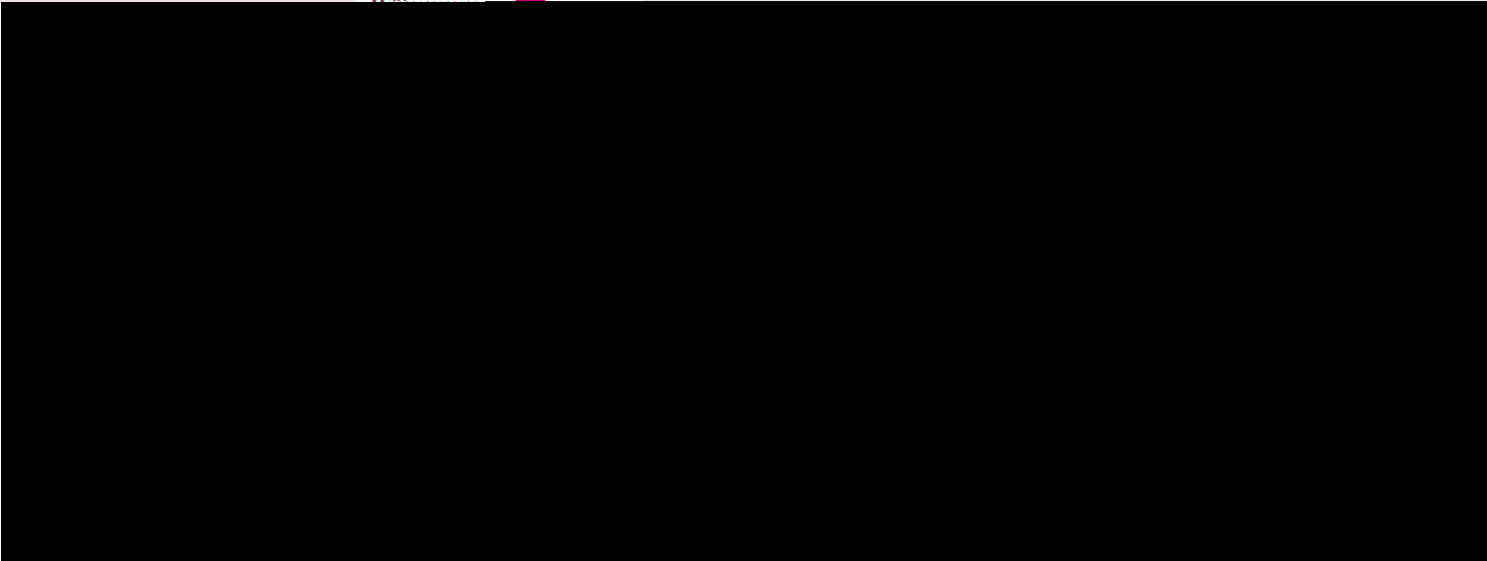
Search

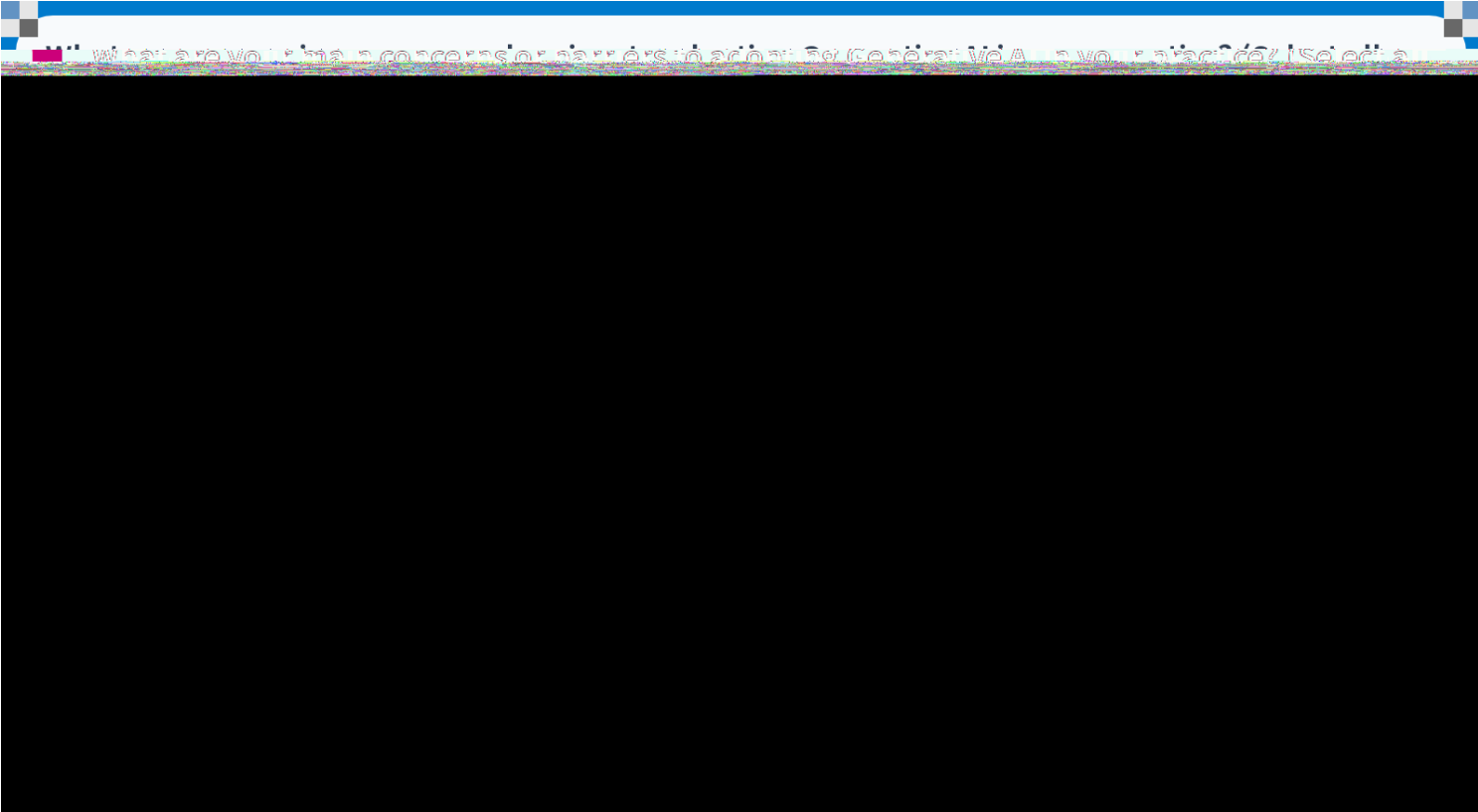




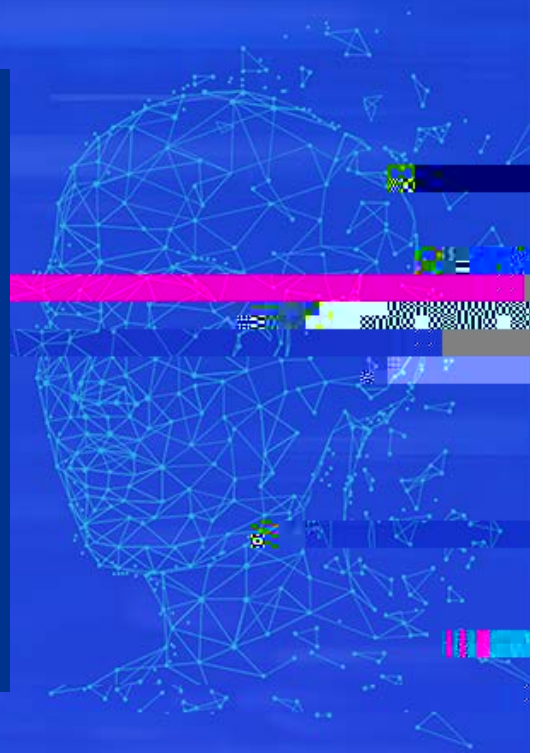
Yes







What is Gen AI?



| What is GenAI?

| Text to...

Mus
ic
Stories
Speech
ch
Computer
Applications

Computer
Code
Imag
es
Robo
ts
Vid
eo

"Italian Pup" – Created with SORA

cdn.openai.com/sora/videos/italian-pup.mp4

Thinking about Generative AI in tax



Personal productivity

How is it applicable?

- Researching & analysing *internal* and *external data* with a GPT interface
- Preparing, streamlining deliverables and outputs
- Gaining better insights, more efficiently



End-to-end business process optimization

How is it applicable?

- Scrape data, identify patterns
- Generate qualitative outputs and reports from quantitative and qualitative inputs
- Full-scale tax processes enhanced with back-end AI capabilities



Strategic value creation

How is it applicable?

- Near-time analysis and business decisions
- Breaking down the boundaries of the tax function
- Connection to other areas of the organization

15

| Value of technology

Limitations on capabilities

Relatively inflexible

Costly to develop

Highly accurate, predictable

- A human can walk away
- Limited use cases with ROI for Tax

16

Use Case Demonstrations



| Let's See It In Action

- **Basic Email Creation & VBA Coding (Greg Homen)**
- **Transfer Pricing Cost Center Interviewer (Greg Homen)**
- **Legal Research (Stephen Bonovich)**
- **GPT creation (Stephen Bonovich)**
- **Tax Benefit Letter (Tyler Gasperlin)**
- **Trial Balance (Tyler Gasperlin)**
- **M&E Classification (Kate Riemersma)**
- **Provision Reporting Chat (Kate Riemersma)**